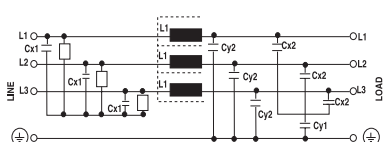




Three-phase filter without neutral line.

Filtro rete trifase senza neutro

Circuit diagram



Technical Specifications:

Manufacture

Metal case, internal components sealed with self-extinguishing resin Vo

Connections

Screws M5 / M8 / M10 / M12
 Ground terminal connected to case

Electrical specifications:

Rated voltage (Vr)	0/480Vac at 50/60Hz
Rated current (Ir)*	referred to room temp.= 40°C
Leakage current (IL)	≤ 18 mA
Voltage test (2s.)	line to ground 3000 Vdc or 1800 Vac line to line 1700 Vdc
Climatic category	HPF (25/085/21) -25°C to +85°C

Caratteristiche tecniche:

Costruzione

Custodia metallica, componenti interni sigillati con resina autoestinguente Vo

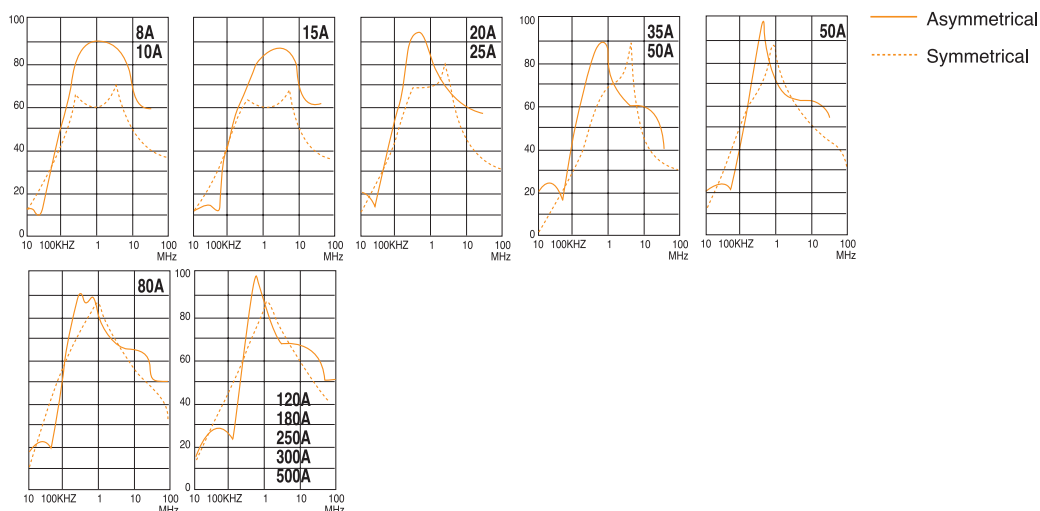
Terminali

Viti da M5 / M8 / M10 / M12
 Terminale di terra collegato alla custodia

Caratteristiche elettriche:

Tensione nominale (Vr)	0/480Vac a 50/60Hz
Corrente nominale (Ir)*	riferita ad una temp.di 40°C
Corrente di fuga (IL)	≤ 18 mA
Tensione di prova (2s.)	linea e massa 3000 Vdc o 1800 Vac linea e linea 1700 Vdc
Categoria climatica	HPF (25/085/21) -25°C to +85°C

Code	IR(A)*	Cx1(μF)	Cx2(μF)	Cy1(pF)	Cy2(pF)	L1(mH)	R=MΩ	Case
AR280.8A.V	8	2.2	2.2	0.1	0.01	7	0.47	F6
AR280.10A.V	10	3	3	0.1	0.047	4	0.47	F6
AR280.15A.V	15	3	3	0.1	0.047	4	0.47	F13
AR280.20A.V	20	3	3	0.1	0.047	4	0.47	F13
AR280.25A.V	25	4	4	0.1	0.047	4	0.47	F11
AR280.35A.V	35	4	4	0.1	0.047	4	0.47	F7
AR280.50A.V	50	4	4	0.1	0.047	1.5	0.47	F7
AR280.80A.V	80	10	10	0.1	0.047	0.9	0.47	F7
AR280.120A.V	120	10	10	0.1	0.047	0.6	0.47	F40B
AR280.150A.V	150	10	10	0.1	0.047	0.6	0.47	F40B
AR280.180A.V	180	10	10	0.1	0.047	0.4	0.47	F40B
AR280.250A.V	250	10	10	0.1	0.047	0.25	0.47	F40B



APPROVALS



Dimensions:

See the page Dimensions
 Consultare la pagina Dimensioni